

Marion County Ag Extension Newsletter

September 2024

In This Newsletter:

Upcoming Events

Apple Crumb Dessert

Family Farm Field Day

BQCA Chute Side Training

National Weather Service Article

A Word From Your County Agent:

If you are still needing CAIP education, please see the upcoming events page in this newsletter. The last day to get your CAIP education is December 5th. If other arrangements for classes need to be made, please give our office a call at 270-692-2421.

As always, our office is open Monday-Friday 8:00am-4:30pm.



Agriculture and Natural Resources Agent
Marion County Extension Office
416 Fairgrounds Road
Lebanon, KY 40033
Email: chelsea.sapp@uky.edu
Phone: 270-692-2421

Cooperative Extension Service

Agriculture and Natural Resources
Family and Consumer Sciences
4-H Youth Development
Community and Economic Development

MARTIN-GATTON COLLEGE OF AGRICULTURE, FOOD AND ENVIRONMENT

Educational programs of Kentucky Cooperative Extension serve all people regardless of economic or social status and will not discriminate on the basis of race, color, ethnic origin, national origin, creed, religion, political belief, sex, sexual orientation, gender identity, gender expression, pregnancy, marital status, genetic information, age, veteran status, physical or mental disability or reprisal or retaliation for prior civil rights activity. Reasonable accommodation of disability may be available with prior notice. Program information may be made available in languages other than English. University of Kentucky, Kentucky State University, U.S. Department of Agriculture, and Kentucky Counties, Cooperating. Lexington, KY 40506



Disabilities
accommodated
with prior notification.

Upcoming Events

September 10

Family Farm Field Day
The Russell Barn at St. Joe

****Counts for CAIP****

4:00pm-7:00pm

September 19

Cattlemen Meeting
7:00pm

****Counts for CAIP****

Guest speaker: Dr. Steve Higgins

Marion County Extension Office

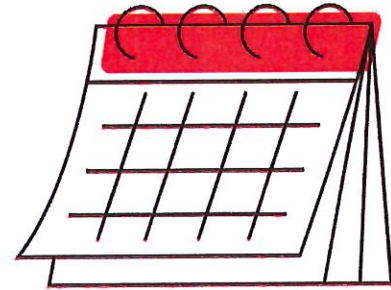
September 21

BQCA Field Day

9am-12pm

Call 270-692-2421 to register

Marion County Fairgrounds
Livestock Barn



October 15

CEC Meeting
5:30pm

Marion County Extension Office

October 17

Cattlemen Meeting

****Counts for CAIP****

Marion County Extension Office



Marion County Cooperative Extension



Tune in Wednesday mornings at 8:30am on
100.9 WLSK Radio Station to hear live
updates and tips from our office!

Apple Crumb Dessert

Servings:4 Serving Size:1/4 of recipe



Ingredients:

Nonstick cooking spray
4 medium apples for baking
1/2 cup quick-cooking oatmeal (uncooked)
1/4 cup light or dark brown sugar, packed
2 teaspoons cinnamon
1/3 cup 100% apple juice

Directions:

Move the oven rack to the center of the oven. Preheat the oven to 350° F.
Spray the bottom and sides of a 9-inch square baking dish with nonstick cooking spray.
Wash and peel the apples. Cut them into thin slices.
Spread the apple slices evenly over the bottom of the baking dish.
In a small bowl, use a fork to mix the oatmeal, brown sugar and cinnamon.
Spread the oatmeal mix evenly over the apples in the baking dish.
Lightly pour the apple juice over the oatmeal mixture.
Cover the dish and bake for 20-30 minutes until apples start to soften.
Uncover and bake for another 15-20 minutes until apples are soft.

Source: LEAP...for Health: USDA Mixing Bowl. What's Cooking? Fat-Free Apple Crumb Dessert
<http://www.whatscooking.fns.usda.gov/recipes/supplemental-nutrition-assistance-program-snap/fat-free-apple-crumb-dessert>.

Tips

A baking apple holds its shape and does not breakdown into puree when heated in an oven. Braeburn, Cortland, Gala, Golden Delicious, Granny Smith, Honeycrisp, Jonagold, Jonathan, Pink Lady, Rome and Winesap are good apple varieties for baking.

Nutrition Facts Per Serving: 130 calories; 0g fat; 0g saturated fat; 0g trans fat; 0mg cholesterol; 0mg sodium; 33g carbohydrate; 3g fiber; 23g sugar; 9g added sugars; 1g protein; 0% Daily Value of vitamin D; 2% Daily Value of calcium; 6% Daily Value of iron; 4% Daily Value of potassium.



Marion County Extension Council Presents: Family Farm Field Day 2024

When: Tuesday, September 10th

Time: 4pm-7pm

Where: The Russell Barn at St. Joe

- FREE to Attend
- Activities for kids
- Marion County Cattlemen will be cooking!

- UK Ag Specialists will give informative talks about a variety of different topics.
- Door Prizes
- On-site cooking demonstrations

Cooperative Extension Service

Agriculture and Natural Resources
Family and Consumer Sciences
4-H Youth Development
Community and Economic Development

MARTIN-GATTON COLLEGE OF AGRICULTURE, FOOD AND ENVIRONMENT

Educational programs of Kentucky Cooperative Extension serve all people regardless of economic or social status and will not discriminate on the basis of race, color, ethnic origin, national origin, creed, religion, political belief, sex, sexual orientation, gender identity, gender expression, pregnancy, marital status, genetic information, age, veteran status, physical or mental disability or reprisal or retaliation for prior civil rights activity. Reasonable accommodation of disability may be available with prior notice. Program information may be made available in languages other than English. University of Kentucky, Kentucky State University, U.S. Department of Agriculture, and Kentucky Counties, Cooperating. Lexington, KY 40506



Disabilities
accommodated
with prior notification.

CHUTE SIDE BQCA

Marion, Nelson, and Washington County



September 21st
9 AM – 12 PM

Lunch will be provided!

Marion County Fairgrounds
420 Fairgrounds Rd
Lebanon, KY 40033

Call your office or use the QR code to sign up!

Washington: 859-336-7741
Marion: 270-692-2421
Nelson: 502-358-9204



**Cooperative
Extension Service**

Agriculture and Natural Resources
Family and Consumer Sciences
4-H Youth Development
Community and Economic Development

MARTIN-GATTON COLLEGE OF AGRICULTURE, FOOD AND ENVIRONMENT

Extensional programs of Kentucky Cooperative Extension serve all people regardless of economic or social status and will not discriminate on the basis of race, color, ethnic origin, national origin, creed, religion, political belief, sex, marital status, gender identity, gender expression, pregnancy, marital status, genetic information, age, veteran status, physical or mental disability or receipt or retaliation for prior civil rights activity. Reasonable accommodations of disability may be available with prior notice. Program information may be made available in languages other than English. University of Kentucky, Kentucky State University, U.S. Department of Agriculture, and Kentucky Counties Cooperating. Lexington, KY 40506





Wildfires and Weather A Potentially Deadly Combination

Tony Edwards - National Weather Service Charleston, WV



Wildland forest fires are fairly common across the Commonwealth, but especially so in the forests of eastern Kentucky. The Kentucky Division of Forestry reports that, on average, there are over 1,400 wildfires each year across Kentucky. Arson is the number one cause of those fires, with uncontrolled burning ranking second. Ninety-nine percent of all wildfires in Kentucky are caused by humans!

Many of us have seen what look like harmless fires burning in the leaf litter in our forests during the dry fall and spring seasons. Some of us may have even been responsible for a burn pile or two getting "out of control". These situations shouldn't be taken lightly, however, as given the right conditions, these fires can become deadly.

On April 6, 1999, rapidly changing weather conditions and steep terrain combined on a wildfire (named the Island Fork Fire) in Rowan County, resulting in the death of two volunteer firefighters, ages 28 and 30. These firefighters were overrun by the wildfire which likely started when a landowner lost control of a fire while clearing a fence line. The wildfire advanced quickly up the steep terrain, with flames as high as 20 feet and winds increasing rapidly to over 35 mph! Char marks on the tree bark were up to 50 feet high! While such fire conditions are rare in Kentucky, they illustrate how dangerous wildfires can be and why you should take measures to prevent them from occurring.

The National Weather Service issues Red Flag Watches and Red Flag Warnings to inform fire management agencies and the public when weather conditions are right for rapid wildfire growth. A **Red Flag Watch** means to be prepared as dangerous fire weather conditions are possible in the next few days but are not occurring yet. A **Red Flag Warning** means dangerous fire weather conditions are occurring now or are expected to occur shortly. During a Red Flag Warning, you should use extreme caution when dealing with anything that could pose a wildfire hazard.

When fire danger is elevated, you may see a burn ban go into effect. Usually these are on a local county level, and are enforced with assistance from local law enforcement. Burn bans generally prohibit burning of forest, grass, crops, woodlands, marshes and other similar areas. Make sure to check with your local fire department or county officials before burning.

Keep in mind that during fire seasons in Kentucky, it is illegal to burn anything within 150 feet of any woodland or brushland between the hours of 6 a.m. and 6 p.m. The **Spring Forest Fire Season runs from February 15 - April 30** and the **Fall Forest Fire Season runs from October 1 - December 15**. Violation of the burn ban is a misdemeanor punishable by law!