



Martin-Gatton
College of Agriculture,
Food and Environment

September HELLO

Dear 4-H Members, Parents,
Volunteers and Teachers,
Check out our September clubs
and activities. If you have any
questions about any Clubs,
Groups or Activities going on
feel free to call.

(270)-692-2421

Amanda Sublett-

4-H Youth Development Agent

Amanda Lee Sublett

or

Kendra Lyvers-

4-H Youth Development Assistant

Kendra Lyvers

Important Dates:
September

Cloverbuds 16th
5:00pm-6:00pm

STEAM 19th
5:30pm-6:30pm

Ham Washing 20th
5:30pm

Ham Days Contest 23rd
5:00pm

Ham Days Auction 28th
10:45am

Livestock Club 30th
6:00pm

Cooperative Extension Service
Agriculture and Natural Resources
Family and Consumer Sciences
4-H Youth Development
Community and Economic Development

Educational programs of Kentucky Cooperative Extension serve all people regardless of economic or social status and will not discriminate on the basis of race, color, ethnic origin, national origin, creed, religion, political belief, sex, sexual orientation, gender identity, gender expression, pregnancy, marital status, genetic information, age, veteran status, or physical or mental disability. University of Kentucky, Kentucky State University, U.S. Department of Agriculture, and Kentucky Counties, Cooperating.

LEXINGTON, KY 40546



Disabilities
accommodated
with prior notification.

AGES 5-8 EVERYONE WELCOME

SEPTEMBER 16TH
5:00PM- 6:00PM

CLOVERBUDS

ACTIVITIES:
ICE CREAM SOCIAL
GOOD THINGS ABOUT ME
HEART TO HEART
ACTIVITY

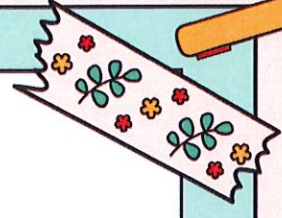
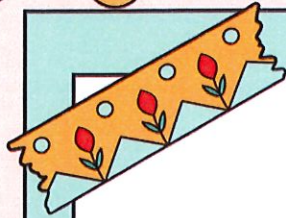
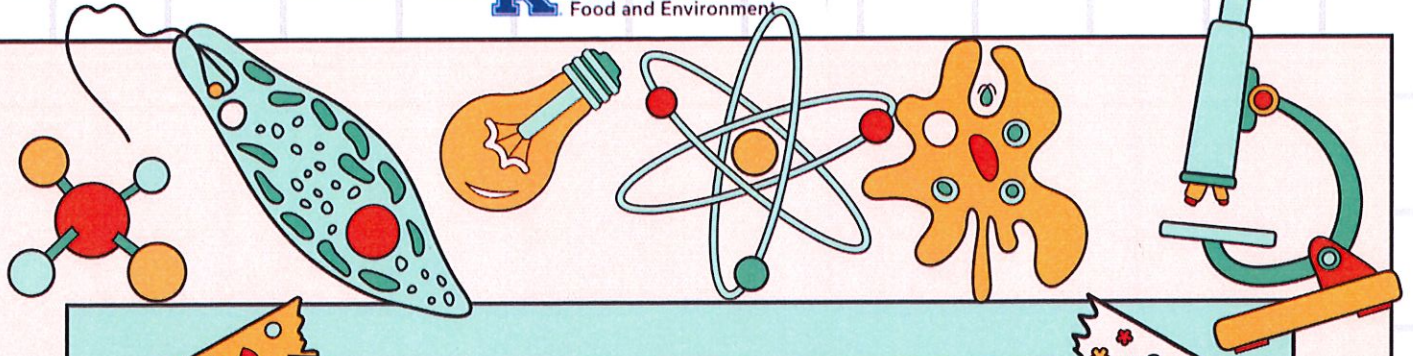
THIS WILL BE OUR FIRST
CLOVERBUD MEETING.
PLEASE BRING A BAG
CONTAINING THINGS
THAT MAKE YOU SPECIAL
(FAMILY PHOTO, SPECIAL
TALENTS, DRAWINGS,
ETC.)

PLEASE CALL TO
REGISTER BY
SEPTEMBER 9TH FOR
PLANNING PURPOSES:
(270)-692-2421

I AM
SPECIAL!

MARION COUNTY EXTENSION
416 FAIRGROUNDS RD.
LEBANON, KY 40033
ENTER THROUGH THE SIDE
DOORS





AGES: 9-18
5:30PM-6:30PM
CALL- (270)692-2421 TO REGISTER

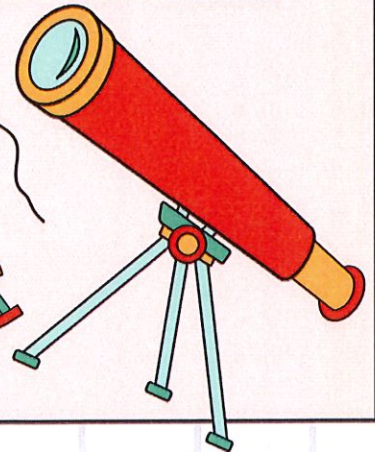
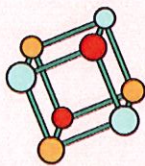
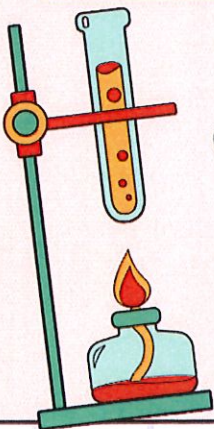
S.T.E.A.M. CHALLENGE

SEPTEMBER 19TH

ELECTRICITY



LOCATION: MARION COUNTY EXTENSION OFFICE





**Are you interested in cows, pigs, sheep, or goats?
Would you like to show livestock at a county or
the state fair?**

If so, join us at our interest meeting & potluck!

**Monday, September 30th
6:00 P.M.**

**Marion County Extension Office
416 Fairgrounds Rd, Lebanon, KY**



**Marion County 4-H
Livestock Club is for
youth ages 9 to 18. You
do not have to own
livestock to be a
member of the
livestock club.**

**Please RSVP by, September 27th by calling or
texting Paighton at (270) 972- 9153.**

Cooperative Extension Service
Agriculture and Natural Resources
Family and Consumer Sciences
4-H Youth Development
Community and Economic Development

Educational programs of Kentucky Cooperative Extension serve all people regardless of economic or social status and will not discriminate on the basis of race, color, ethnic origin, national origin, creed, religion, political belief, sex, sexual orientation, gender identity, gender expression, pregnancy, marital status, genetic information, age, veteran status, or physical or mental disability, University of Kentucky, Kentucky State University, U.S. Department of Agriculture, and Kentucky Counties, Cooperating.
LEXINGTON, KY 40546



Disabilities
accommodated
with prior notification.



UK Martin-Gatton
College of Agriculture,
Food and Environment

**Are you interested in cows, pigs, sheep, or goats?
Would you like to show livestock at a county or
the state fair?**

If so, join us at our interest meeting & potluck!

**Monday, September 30th
6:00 P.M.**

**Marion County Extension Office
416 Fairgrounds Rd, Lebanon, KY**



**Marion County 4-H
Livestock Club is for
youth ages 9 to 18. You
do not have to own
livestock to be a
member of the
livestock club.**

**Please RSVP by, September 27th by calling or
texting Paighton at (270) 972- 9153.**

Cooperative Extension Service
Agriculture and Natural Resources
Family and Consumer Sciences
4-H Youth Development
Community and Economic Development

Educational programs of Kentucky Cooperative Extension serve all people regardless of economic or social status and will not discriminate on the basis of race, color, ethnic origin, national origin, creed, religion, political belief, sex, sexual orientation, gender identity, gender expression, pregnancy, marital status, genetic information, age, veteran status, or physical or mental disability. University of Kentucky, Kentucky State University, U.S. Department of Agriculture, and Kentucky Counties, Cooperating.
LEXINGTON, KY 40546




Disabilities
accommodated
with prior notification.



Martin-Gatton
College of Agriculture,
Food and Environment

AGES 5-8

CL^{VER}BUDS

LOCATION: MARION COUNTY EXTENSION OFFICE
FOR MORE INFORMATION CALL: 270-692-2421

5:00-6:00pm

September 16th

October 14th

November 11th

December 9th

January 13th

February 10th

March 10th

April 14th- End of Year Party

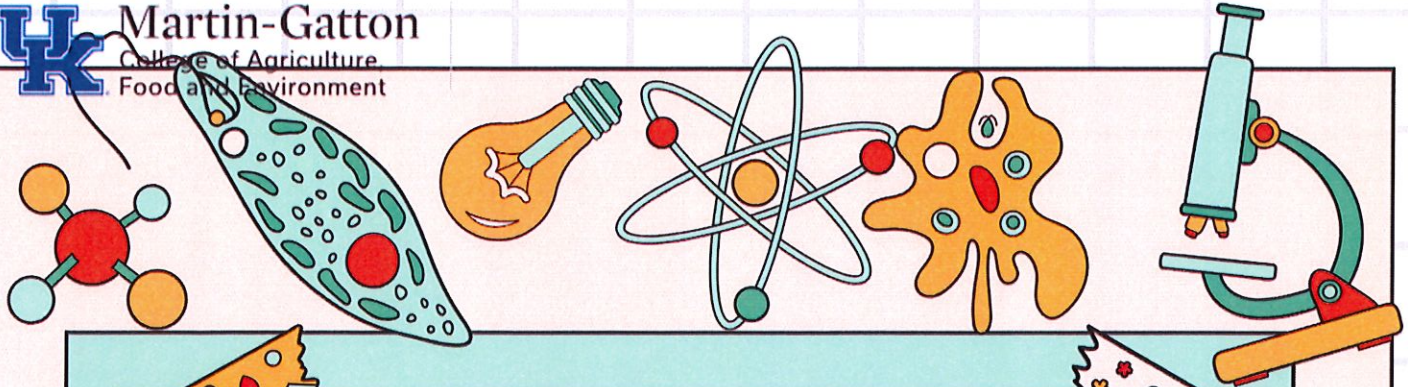
Cooperative Extension Service
Agriculture and Natural Resources
Family and Consumer Sciences
4-H Youth Development
Community and Economic Development

Educational programs of Kentucky Cooperative Extension serve all people regardless of economic or social status and will not discriminate on the basis of race, color, ethnic origin, national origin, creed, religion, political belief, sex, sexual orientation, gender identity, gender expression, pregnancy, marital status, genetic information, age, veteran status, or physical or mental disability. University of Kentucky, Kentucky State University, U.S. Department of Agriculture, and Kentucky Counties, Cooperating.

LEXINGTON, KY 40546



Disabilities
accommodated
with prior notification.



S.T.E.A.M. CHALLENGE

5:30-6:30

SEPTEMBER 19TH

OCTOBER 17TH

NOVEMBER 21ST

DECEMBER 19TH

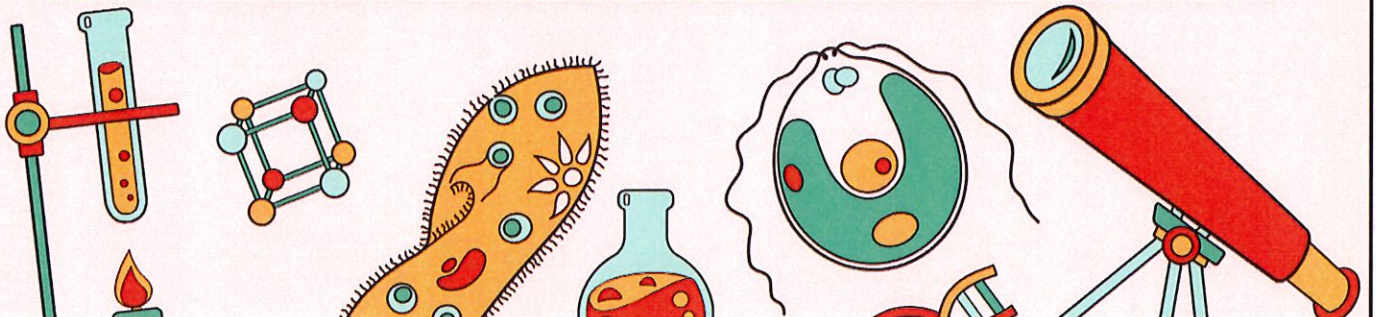
JANUARY 16TH

FEBRUARY 20TH

MARCH 20TH

APRIL 17TH - END OF YEAR PARTY
LOCATION: MARION COUNTY EXTENSION OFFICE

FOR MORE INFORMATION CALL: 270-692-2421





Location: Marion County Extension Office

6:00pm

September 30th

October 10th

November 14th

December 12th

January 9th

February 13th

March 13th

April 3rd

May 8th

June 12th

Cooperative Extension Service
Agriculture and Natural Resources
Family and Consumer Sciences
4-H Youth Development
Community and Economic Development

Educational programs of Kentucky Cooperative Extension serve all people regardless of economic or social status and will not discriminate on the basis of race, color, ethnic origin, national origin, creed, religion, political belief, sex, sexual orientation, gender identity, gender expression, pregnancy, marital status, genetic information, age, veteran status, or physical or mental disability. University of Kentucky, Kentucky State University, U.S. Department of Agriculture, and Kentucky Counties, Cooperating.

LEXINGTON, KY 40546



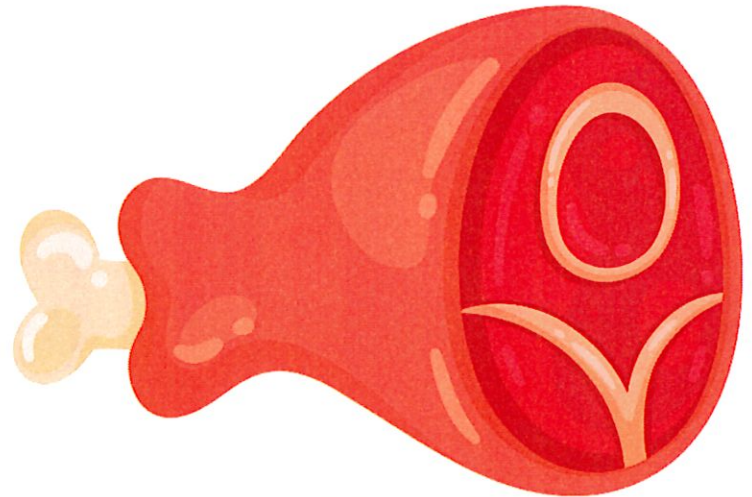
Disabilities
accommodated
with prior notification.



Marion County Country Ham

Important Dates

- Ham Washing
September 20th 5:30
- Ham Days Contest
September 23rd 5:00pm
- Country Ham Auction
September 28th 10:30am
- Auction Wrap-up
October 24th
6:30



Dear Country Ham Participants,
and Parents

We will have ham washing on
September 20th, to prepare for
the Ham Days Contest happening
on September 23rd. Can't wait to
see you there.

**Wanting to Register as a bidder?
Please Contact
Paighton Livers
(270)-972-9153**



2024 Marion County 4-H Country Ham Auction

Are you interested in supporting Marion County 4-H and its members? While also purchasing a delicious country ham perfect for your Thanksgiving or Christmas dinner table? If so, join us at our second annual country ham auction!

**Saturday, September 28th
10:45 A.M.**

**Marion County Ham Days
Main Stage on Main Street**



**Twenty-one 4-H members
will be auctioning off their
country hams that they've
been working on since
January!**

**To register as a bidder call Paighton at
(270) 972-9153 or email
plivers13@outlook.com by
Friday, September 20th**

Cooperative Extension Service
Agriculture and Natural Resources
Family and Consumer Sciences
4-H Youth Development
Community and Economic Development

Educational programs of Kentucky Cooperative Extension serve all people regardless of economic or social status and will not discriminate on the basis of race, color, ethnic origin, national origin, creed, religion, political belief, sex, sexual orientation, gender identity, gender expression, pregnancy, marital status, genetic information, age, veteran status, or physical or mental disability. University of Kentucky, Kentucky State University, U.S. Department of Agriculture, and Kentucky Counties, Cooperating.
LEXINGTON, KY 40546



Disabilities
accommodated
with prior notification.



COUNTRY HAM WINNERS

**2009 NON-SMOKED
SPEECH - 1ST ADAM BLANFORD
OVERALL - 1ST ADAM BLANFORD
2010 NON-SMOKED
HAM - 1ST COLLIN RAKES
OVERALL - 3RD COLLIN RAKES**



**2011 NON-SMOKED
HAM - 1ST KAYLEN BARTLEY
SPEECH - 3RD KAYLEN BARTLEY
OVERALL - 1ST KAYLEN BARTLEY**



**2012 NON-SMOKED
SPEECH - 3RD KINLEY WILLET
2ND PLACE ANNA MATTINGLY
1ST AMELIA MATTINGLY
OVERALL - 3RD KINLEY WILLET
2ND AMELIA MATTINGLY
1ST ANNA MATTINGLY**



**2014 NON-SMOKED
HAM - 2ND PLACE PRESSLEY DOWNS
2012 OVERALL AMELIA MATTINGLY
JUNIOR CHAMPION AMELIA MATTINGLY**



Congratulations



Andrew Mattingly who earned Grand Champion in the State 4-H Senior Sweet County Ham Recipe Contest at the Kentucky State Fair!! We are so proud of him!!!



Jr. Cattlemen's Events



- Monthly Meeting
September 19th
- T-Shirt design due
September 19th,
design papers
available at the
office
- Permission forms
for trip to be
given out October
17th



Martin-Gatton

College of Agriculture,
Food and Environment

THE MARTIN-GATTON COLLEGE OF AGRICULTURE, FOOD AND ENVIRONMENT IS AN EQUAL OPPORTUNITY ORGANIZATION WITH RESPECT TO EDUCATION AND EMPLOYMENT AND AUTHORIZATION TO PROVIDE RESEARCH, EDUCATION INFORMATION AND OTHER SERVICES ONLY TO INDIVIDUALS AND INSTITUTIONS THAT FUNCTION WITHOUT REGARD TO ECONOMIC OR SOCIAL STATUS AND WILL NOT DISCRIMINATE ON THE BASIS OF RACE, COLOR, ETHNIC ORIGIN, NATIONAL ORIGIN, CREED, RELIGION, POLITICAL BELIEF, SEX, SEXUAL ORIENTATION, GENDER IDENTITY, GENDER EXPRESSION, PREGNANCY, MARITAL STATUS, GENETIC INFORMATION, AGE, VETERAN STATUS, PHYSICAL OR MENTAL DISABILITY OR REPRISAL OR RETALIATION FOR PRIOR CIVIL RIGHTS ACTIVITY. REASONABLE ACCOMMODATION OF DISABILITY MAY BE AVAILABLE WITH PRIOR NOTICE. PROGRAM INFORMATION MAY BE MADE AVAILABLE IN LANGUAGES OTHER THAN ENGLISH. INQUIRIES REGARDING COMPLIANCE WITH TITLE VI AND TITLE VII OF THE CIVIL RIGHTS ACT OF 1964, TITLE IX OF THE EDUCATIONAL AMENDMENTS, SECTION 504 OF THE REHABILITATION ACT AND OTHER RELATED MATTER SHOULD BE DIRECTED TO EQUAL OPPORTUNITY OFFICE, MARTIN-GATTON COLLEGE OF AGRICULTURE, FOOD AND ENVIRONMENT, UNIVERSITY OF KENTUCKY, ROOM S-105, AGRICULTURE SCIENCE BUILDING, NORTH LEXINGTON, KENTUCKY 40546, THE UK OFFICE OF INSTITUTIONAL EQUITY AND EQUAL OPPORTUNITY, 13 MAIN BUILDING, UNIVERSITY OF KENTUCKY, LEXINGTON, KY 40506-0032 OR US DEPARTMENT OF AGRICULTURE, OFFICE OF THE ASSISTANT SECRETARY FOR CIVIL RIGHTS, 1400 INDEPENDENCE AVENUE, SW, WASHINGTON, D.C. 20250-9410.

Cooperative Extension Service
Agriculture and Natural Resources
Family and Consumer Sciences
4-H Youth Development
Community and Economic Development

Educational programs of Kentucky Cooperative Extension serve all people regardless of economic or social status and will not discriminate on the basis of race, color, ethnic origin, national origin, creed, religion, political belief, sex, sexual orientation, gender identity, gender expression, pregnancy, marital status, genetic information, age, veteran status, or physical or mental disability. University of Kentucky, Kentucky State University, U.S. Department of Agriculture, and Kentucky Counties, Cooperating.

LEXINGTON, KY 40546



Disabilities
accommodated
with prior notification.